

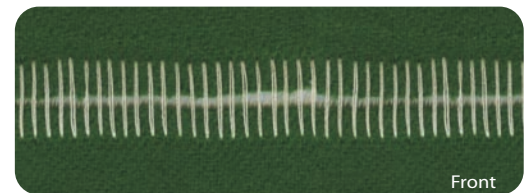
A SOLUTION FOR:

CONTINUOUS PROCESSING

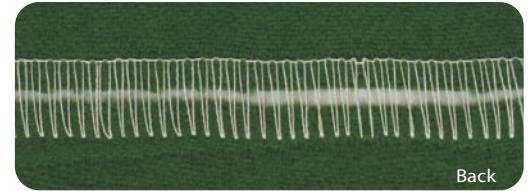


MERROW 70-D3B-2 G SPECIFICATIONS

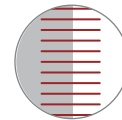
OPERATING SPEED:	2250 rpm
STANDARD STITCH ECCENTRIC :	6 spi
STITCH ECCENTRIC RANGE :	4-12 spi
STANDARD NEEDLE :	8SDT
NEEDLE RANGE:	3SDT - 8SDT
STITCH TYPE	501
STITCH WIDTH :	5/8" (16mm)
NUMBER OF THREADS	1



Front



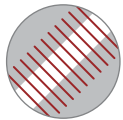
Back



BUTTED
SEAM



WOVENS



GAP

70-D3B-2 G | BUTTED SEAM MACHINE

Industrial Gap Stitch Machine for Seam Detection and/or Thicker Fabrics

- Sews a 1/32" - 1/16" Gap Between Joined Ends
- 10 Year Warranty
- Ideally Suited for Applications that Require Seam Detection Between Joined Ends
- **Designed and Engineered in the U.S.A.**
- Effective For Applications that Require Drainage Between Pieces of Joined Fabric
- **Parts and Service Available in 65 Countries**
- Perfect for Thick Fabric - the Gap Allows the Seam to Lay Flat under Tension
- For More Information Visit www.merrow.com

CLASS

MODEL

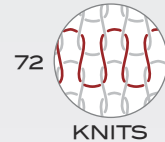
OPTION

70 - D3B - 2

G

STYLE

MERROW has the Widest Variety of Sewing Machines for End-to-End Seaming.



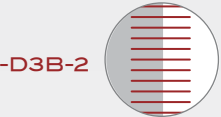
CLASS

70

72

STYLE

OPTION



BUTTED SEAM

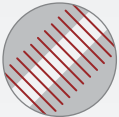
Machine produces a flat, one-thread butted seam (standard configuration).



STITCH MULTIPLIER

Machine is designed with a non-differential mechanism for increasing the stitch count, particularly at selvages.

G



Machine creates a gap between the joined ends of the fabric.

R



Machine creates a rolled seam at joined ends of fabric.

HP



Machine is engineered for use on high pile fabric.

LS



Two-thread locked stitch machine.

CNP



Machine is chemically nickel plated for use in wet and harsh environments; extreme corrosion resistance.

RAIL



Machine is designed to be mounted on a railway sewing system.



MERROW[®]
SEWING MACHINE COMPANY

502 BEDFORD STREET
FALL RIVER, MA 02720 USA
1001.800.431.6677
WWW.MERROW.COM

- Denotes Styles/Options that are INCLUDED on this Model
- Denotes Styles/Options that are AVAILABLE for each Machine Class