

IDL-309

3-THREAD CARPET OVEREDGING SEWING MACHINE WITH TRIMMER



IDL-309 series is made for overedging on tufted carpets or rugs, blankets jute or poly propylene bags and any other materials



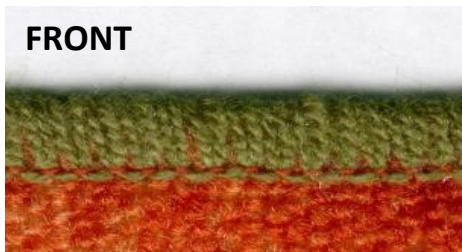
MACHINE SPECIFICATION:

- * Speed : 3,000 r.p.m.
- * Needle : 1
- * Thread : 3
- * Stitch Range : 1.8 ~ 4.5 mm
- * Seam Width : 10 mm

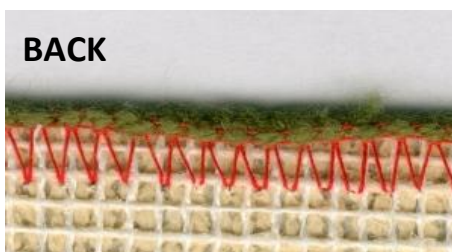


MADE IN TAIWAN

FRONT



BACK



IDL-309

3-THREAD CARPET OVEREDGING SEWING MACHINE WITH TRIMMER

IDL-309 series is made for overedging on tufted carpets or rugs, blankets jute or poly propylene bags and any other materials



MACHINE SPECIFICATION:

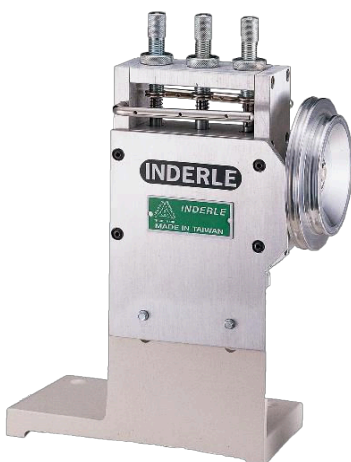
- * Speed : 3,000 r.p.m.
- * Needle : 1
- * Thread : 3
- * Stitch Range : 1.8 ~ 4.5 mm
- * Seam Width : 10 mm



MADE IN TAIWAN

IDL-01 SHELL STITCH TIMING DEVICE

IDL-01 can easily be installed for all kinds of 3 threads overlock machine. It produces various patterns of fancy ornamental stitch by combination of cams and adjustment of thread tensions.



IDL-2502

2 THREAD CARPET OVEREDGING SEWING MACHINE (without Trimmer)

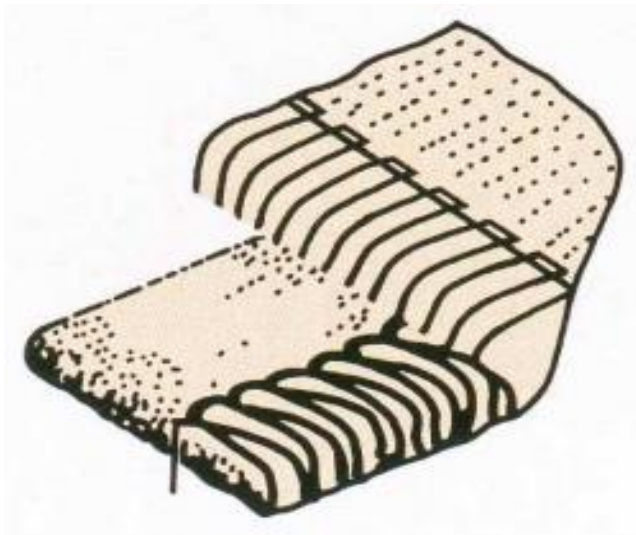
*This machine is made for overedging on tufted carpets ·
rugs · car mat · jute and any extra materials.*



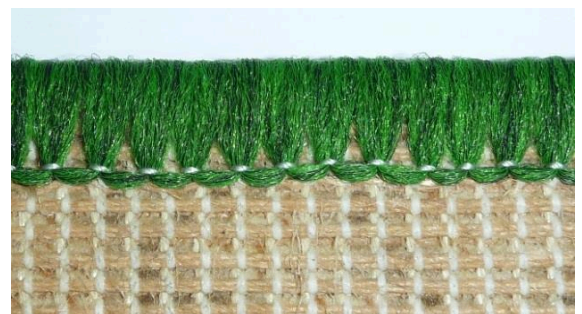
MADE IN TAIWAN

MACHINE SPECIFICATION:

- * Speed : 3,500 r.p.m.
- * Needle: 1
- * Thread: 2
- * Stitch Range : 3.0 ~ 8.0 mm
- * Seam Width : 13 mm



SEAM WIDTH



IDL-2502L

2 THREAD 'LEFT HAND' CARPET OVEREDGING SEWING MACHINE (without Trimmer)

This machine is made for overedging on tufted carpets · rugs · car mat · jute and any extra materials.



MACHINE SPECIFICATION:

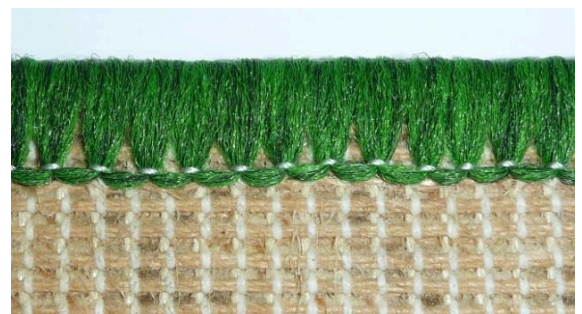
For Left Handed Users

- * Speed : 3,500 r.p.m.
- * Needle: 1
- * Thread: 2
- * Stitch Range : 3.0 ~ 8.0 mm
- * Seam Width : 13 mm



MADE IN TAIWAN

SEAM WIDTH



IDL-2502K

2 THREAD CARPET OVEREDGING SEWING MACHINE (WITH TRIMMER)

IDL-2502K is made for overedging on tufted carpets · rugs · car mat · jute and any extra materials.



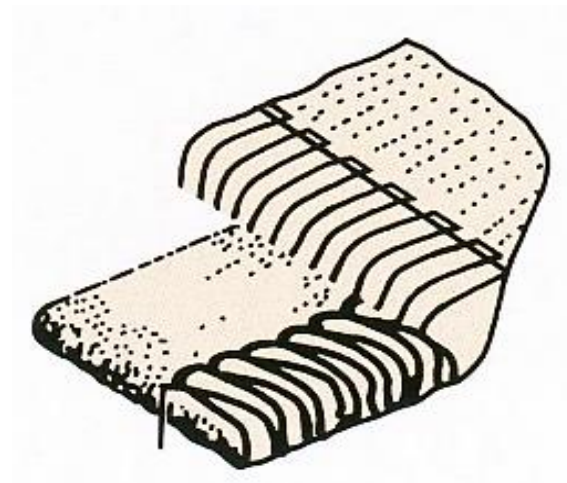
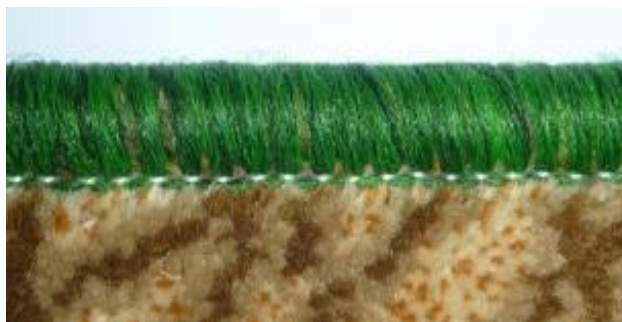
MADE IN TAIWAN

MACHINE SPECIFICATION:

- * Speed : 3,500 r.p.m.
- * Needle: 1
- * Thread: 2
- * Stitch Range : 3.0 ~ 8.0 mm
- * Seam Width : 13 mm



SEAM WIDTH



IDL-2502LK

2 THREAD 'LEFT HAND' CARPET OVEREDGING SEWING MACHINE (WITH TRIMMER)

IDL-2502K is made for overedging on tufted carpets · rugs · car mat · jute and any extra materials.



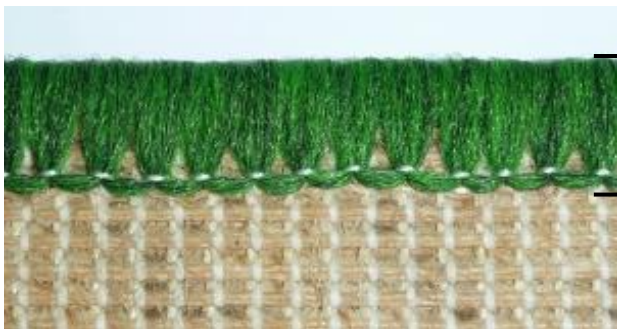
MACHINE SPECIFICATION:

For Left Handed Users

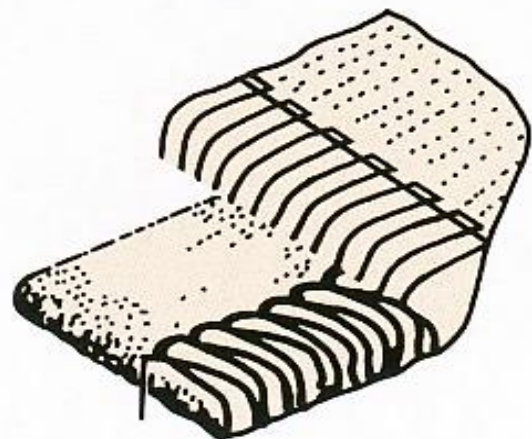
- * Speed : 3,500 r.p.m.
- * Needle: 1
- * Thread: 2
- * Stitch Range : 3.0 ~ 8.0 mm
- * Seam Width : 13 mm



MADE IN TAIWAN



SEAM WIDTH



IDL-2502-PT

2 THREAD CARPET OVEREDGING SEWING MACHINE

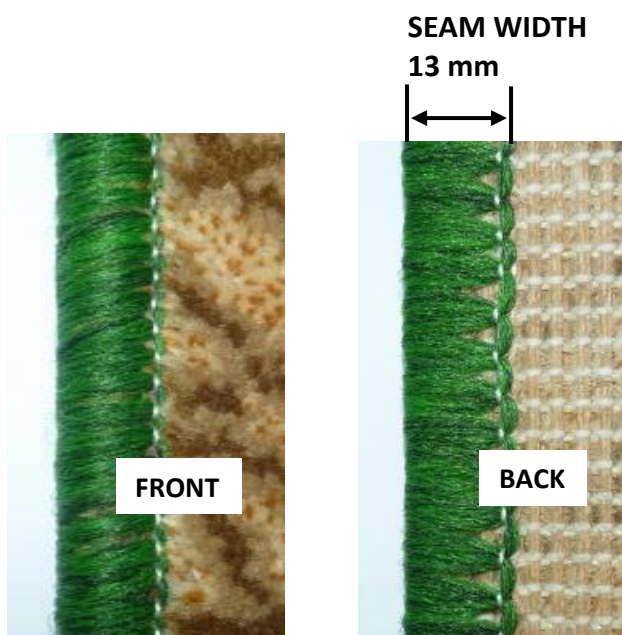


IDL-2502-PT is made for overedging on tufted carpets, rugs, car mat, jute and any extra materials.



MACHINE SPECIFICATION:

- * Speed : 3,500 r.p.m.
- * Needle: 1
- * Thread: 2
- * Stitch Range : 3.0 ~ 8.0 mm
- * Seam Width : 13 mm



IDL-2502EEK-AG

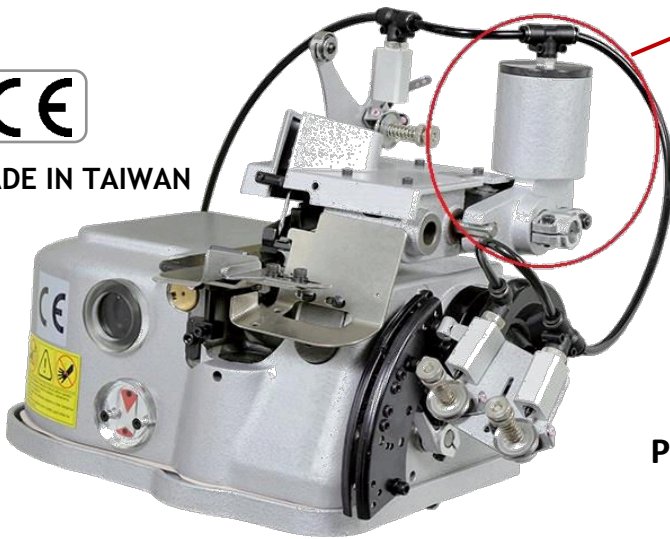
2 THREAD CARPET OVEREDGING SEWING MACHINE W/ CUTTER, AIR FOOT LIFTER & TENSION RELEASER (NARROW SEAM)



IDL-2502EEK-AG is made for overedging on tufted carpets · rugs · car mat · jute and any extra materials.



MADE IN TAIWAN

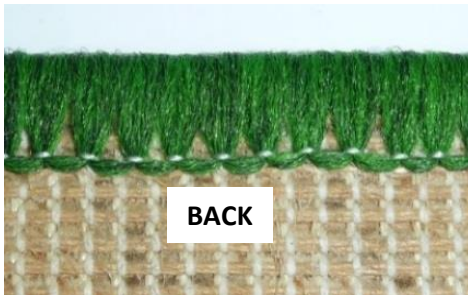


AIR FOOT LIFTER

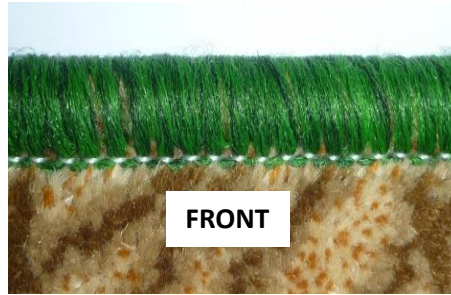
MACHINE SPECIFICATION:

- * Speed : 3,500 r.p.m.
- * Needle: 1
- * Thread: 2
- * Stitch Length : 3.0 ~ 8.0 mm
- * **Stitch Width : 6 mm Minimum**

PRESSER FOOT HEIGHT: 15 mm



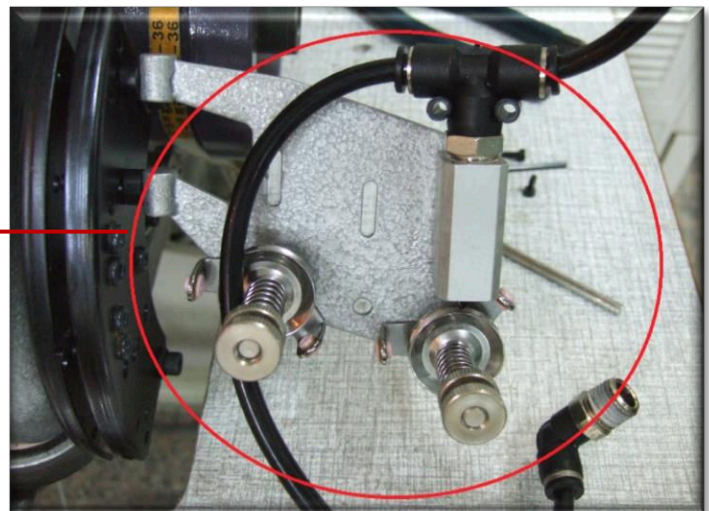
BACK



FRONT

STITCH WIDTH
6 mm

WITH THREAD TENSION RELEASER



IDL-2503

3 THREAD CARPET OVEREDGING SEWING MACHINE (WITHOUT TRIMMER)



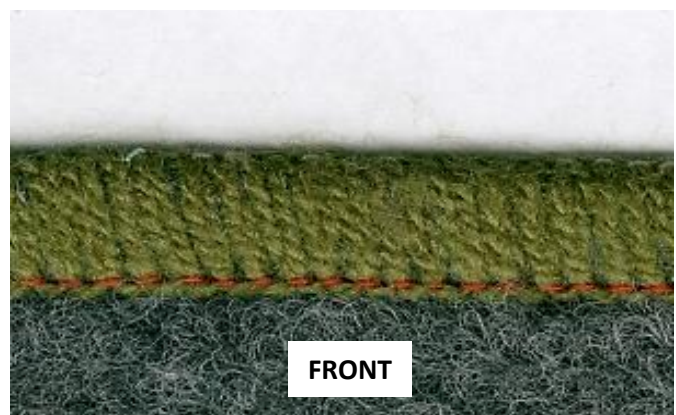
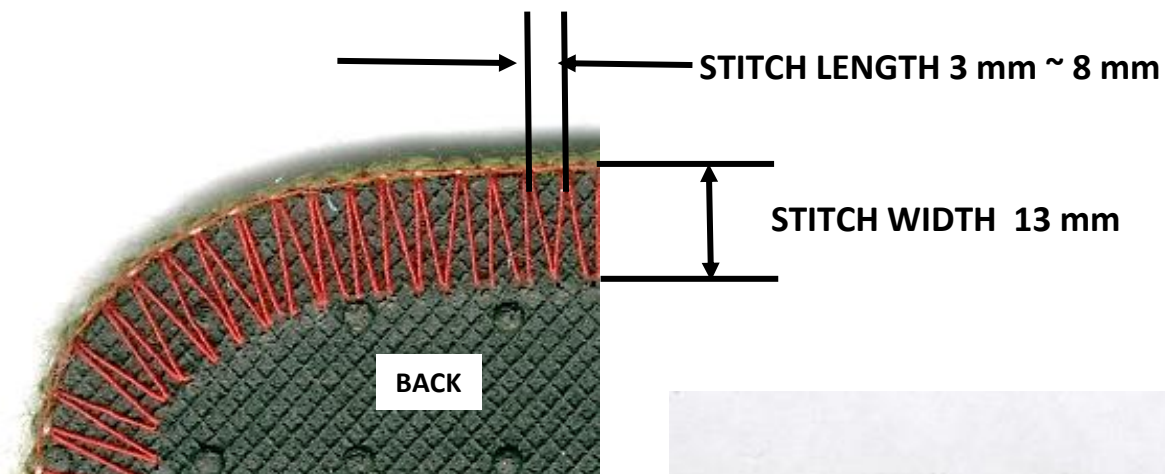
IDL-2503 is made for overedging on tufted carpets · rugs · car mat · jute and any extra materials.



MACHINE SPECIFICATION:

- * Speed : 3,500 r.p.m.
- * Needle: 1
- * Thread: 3
- * Stitch Range : 3 mm ~ 8 mm
- * Seam Width : 13 mm
- * Gross Weight: 43 kg
- * Dimension: 50 x 40 x 50 cm

* Presser Foot Height: 15 mm



IDL-2503L

3 THREAD 'LEFT HAND' CARPET OVEREDGING SEWING MACHINE (without TRIMMER)



IDL-2503L is made for overedging on tufted carpets · rugs · car mat · jute and any extra materials.

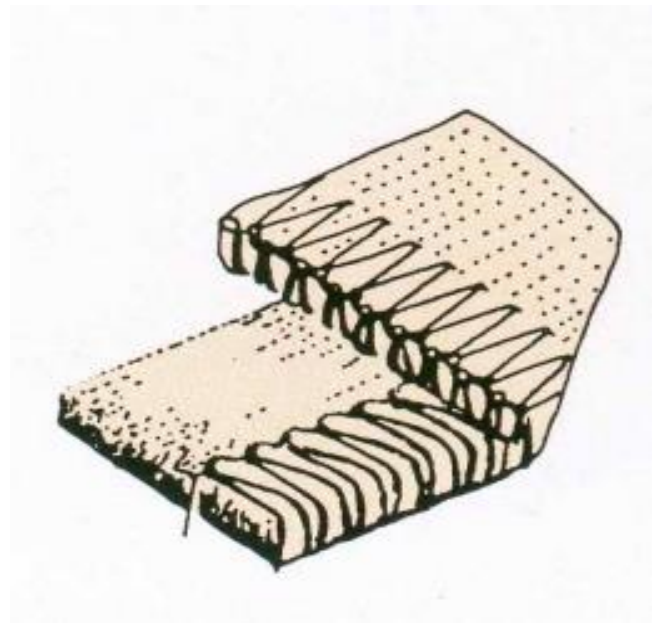
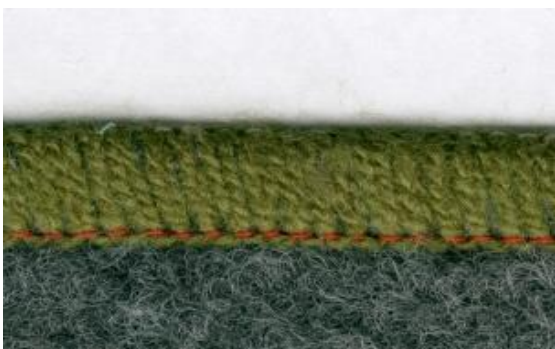
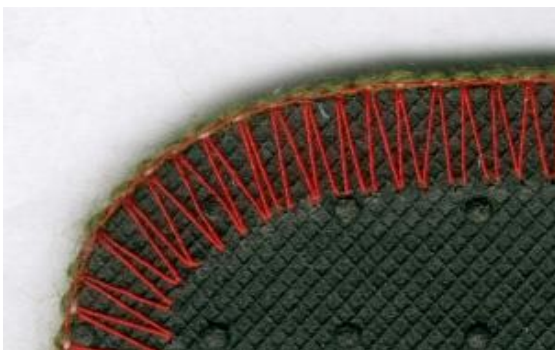
MACHINE SPECIFICATION:

For Left Handed Users

- * Speed : 3,500 r.p.m.
- * Needle: 1
- * Thread: 3
- * Stitch Range : 3.0 ~ 8.0 mm
- * Seam Width : 13 mm



MADE IN TAIWAN



IDL-2503K



3 THREAD CARPET OVEREDGING SEWING MACHINE (WITH TRIMMER)

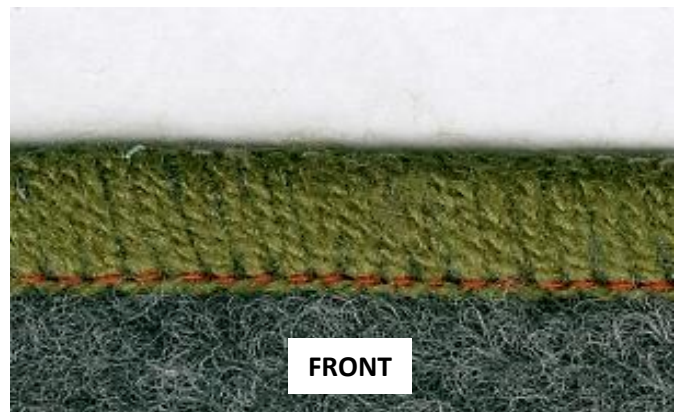
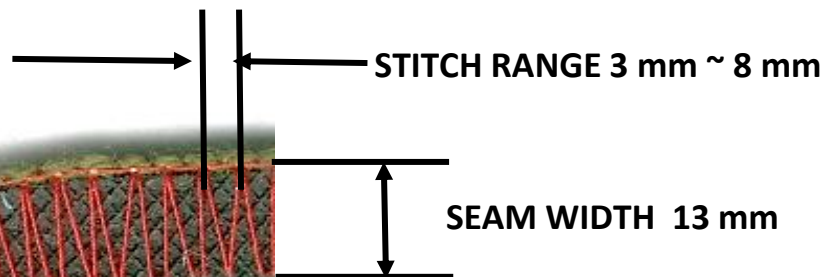
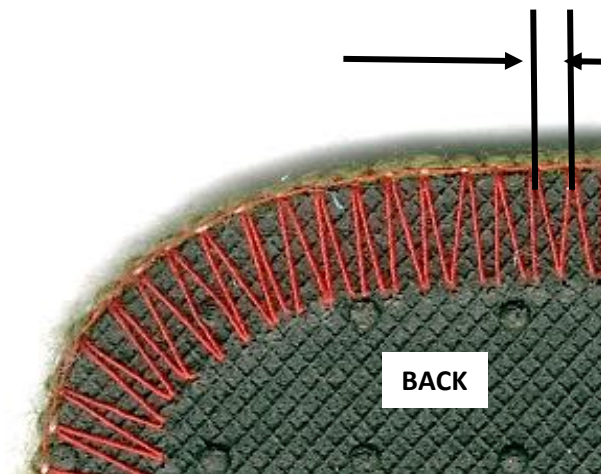
IDL-2503K is made for overedging on tufted carpets · rugs · car mat · jute and any extra materials.



MACHINE SPECIFICATION:

- * Speed : 3,500 r.p.m.
- * Needle: 1
- * Thread: 3
- * Stitch Range : 3 mm ~ 8 mm
- * Seam Width : 13 mm

* Presser Foot Height: 15 mm



IDL-2503LK

3 THREAD 'LEFT HAND' CARPET OVEREDGING SEWING MACHINE (WITH TRIMMER)

IDL-2503K is made for overedging on tufted carpets · rugs · car mat · jute and any extra materials.



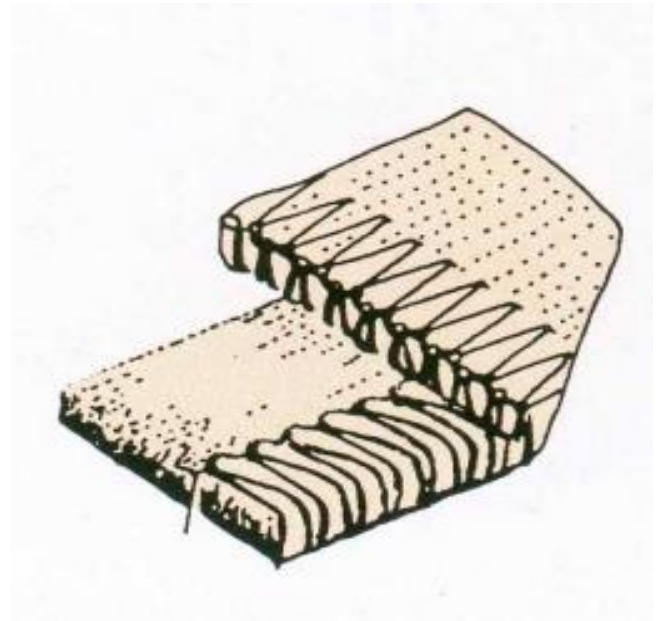
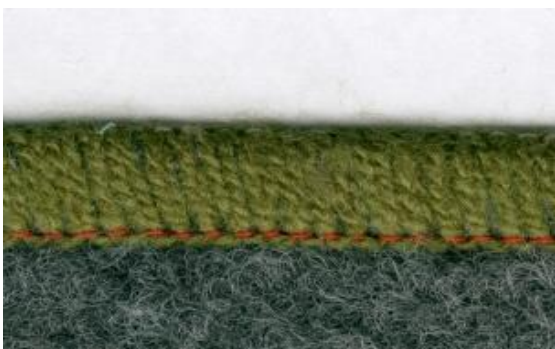
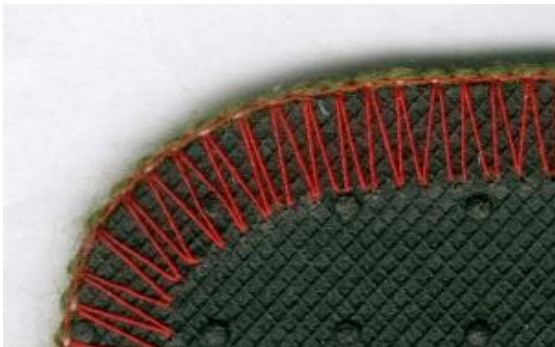
MACHINE SPECIFICATION:

For Left Handed Users

- * Speed : 3,500 r.p.m.
- * Needle: 1
- * Thread: 3
- * Stitch Range : 3.0 ~ 8.0 mm
- * Seam Width : 13 mm



MADE IN TAIWAN



IDL-920PT

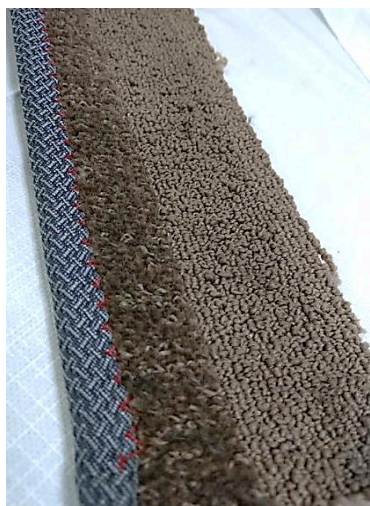
PORTABLE FLOOR CARPET BINDING ZIGZAG MACHINE

This machine is especially made for binding heavy large size carpets directly on the floor.



MACHINE SPECIFICATION:

- * Speed : 1,500 r.p.m.
- * Single Needle Lockstitch
- * Auto Trimming Mechanism
- * Needle Specification: DPx5
- * Stitch Range: Max 5.0 mm
- * Seam Width: Max 12.0 mm
- * Synchronized Puller System
- * Binder available in different sizes



IDL-2200

CARPET FRINGING MACHINE

This machine is suitable for fringe on carpet materials, tufted carpet, mat, bed cover, shawl, sunblind...etc. Fully automatic lubrication. Fringe and overedge seam sewing together.

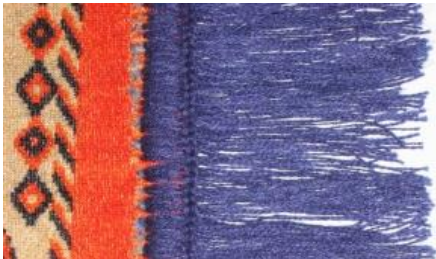


MACHINE SPECIFICATION:

- * Speed : 1,000 r.p.m.
- * Needle: 1
- * Thread : 1
- * Stitch Range : 3mm ~ 8 mm
- * Fringe Length: 6mm ~ 10 mm



MADE IN TAIWAN



IDL-2200NC

CARPET FRINGING MACHINE (UNCUT FRINGE)



This machine is suitable for fringe on carpet materials, tufted carpet, mat, bed cover, shawl, sunblind...etc. Fully automatic lubrication. Fringe and overedge seam sewing together.



MACHINE SPECIFICATION:

- * Speed : 1,000 r.p.m.
- * Needle : 1
- * Thread : 1
- * Stitch Range : 3mm ~ 8 mm
- * Fringe Length: 6mm ~ 10 mm



MADE IN TAIWAN



IDL-4AC

3 THREADS CARPET OVEREDGING SEWING MACHINE / INNER TURN



IDL-4AC is made for overedging on tufted carpets · rugs · car mat · jute and any extramaterials. Suitable for overedging custom carpets which are used for Aircrafts and Automobiles.



MADE IN TAIWAN

MACHINE SPECIFICATION:

- * **SPEED** : 1200 r.p.m.
- * **NEEDLE**: 1
- * **THREAD**: 3
- * **STITCH RANGE** : 3.5 ~ 7.0 mm
- * **SEAM WIDTH** : 12 mm



IDL-4AC-AF

3 THREADS CARPET OVEREDGING SEWING
MACHINE / INNER TURN WITH UPPER FEEDER



MACHINE SPECIFICATION:

- * **SPEED** : 1200 r.p.m.
- * **NEEDLE**: 1
- * **THREAD**: 3
- * **STITCH RANGE** : 3.5 ~ 7.0 mm
- * **SEAM WIDTH** : 12 mm



MADE IN TAIWAN



IDL-4AC-AF is made for overedging on heavy tufted carpets 、 rugs 、 car mat 、 jute and any extramaterials. With Upper Feeder that can easily move the fabric forward, this machine is suitable for overedging custom carpets which are used for Aircrafts and Automobiles without damaging the non-slip backing.



IDL-81200-AF

2 THREAD OVEREDGING SEWING MACHINE WITH UPPER FEED DOG



IDL-81200-AF is made for overedging on rugs, jute and other materials. This machine is similar to IDL-4AC except it has an Upper Feed Dog.



MACHINE SPECIFICATION:

- * Needle: 1
- * Thread: 2
- * Stitch Range : 3.5 ~ 7.0 mm
- * Seam Width : 19 mm



OVERLOCKING SEAM



IDL-2503 SERIES

4 THREAD CARPET OVEREDGING SEWING MACHINE (4 COLOR STITCH)

*This machine is made for overedging on tufted carpets ·
rugs · car mat · jute and any extra materials.*



MACHINE SPECIFICATION:

- * Speed : 3,500 r.p.m.
- * Needle: 1
- * Thread: 4
- * Stitch Range : 3.0 ~ 8.0 mm
- * Seam Width : 13 mm



MADE IN TAIWAN



QUALITY AND PRECISION MANUFACTURING



INDERLE 25520 UPPER BRACKET



ORDINARY 25520 UPPER BRACKET



INDERLE 25520 SET



ORDINARY 25520 SET

Our engineers see the need to grind the flat contact surfaces of each part to ensure smooth assembling and avoid strong vibration when the machine is running. This enables the lower looper to move smoothly with minimal noise and friction which not only prolongs the life of the machine and parts, but also helps produce quality stitching.

This is only one of many parts in our machines. We do the same with all other parts, because we believe that perfecting every part makes up a true quality machine. It's the small parts that make all the difference!

We insist on state-of-the-art quality by adding extra processing and efforts which makes INDERLE stand out from the rest of Taiwan manufacturers. Ours is Taiwan quality like no one else.